

EM FIRE ALARM SYSTEM

Photoelectric Type Smoke Detector

- **This detector is suitable for security monitor and fire alarm system based on DC 12V power supply.**



CM-WT12L

ISO 9001 • CE Approved

DESCRIPTION

The photoelectric type smoke detector is based on the photoelectric sensing principle to make up. When fire break out and smoke enters the light-tight box, the particles of smoke scatter the infrared light, and this scattered light goes into the receiving element, thereby emitting an electric current, and while the electric current is up to the fixed extent, the fire alarm will be activated.

This is an advance scientific device. It is very quick and accurate to activate the early fire warning system. Because of the pretty and compact styling, it is most suitable for the interior decoration of the modern buildings.

ADVANTAGES

- With the photoelectric sensing principles, this kind of detectors is activated more quickly, accurately and reliable, and there are no false alarm due to chemicals, exhausting gas, wind and exterior light.
- Because of the compact styling and pretty outlines, it is most suitable for such modern buildings as employed in the design of decorative smooth ceilings.
- With stainless steel screen of holes' diameter 0.5mm preventing from flying insects and dust particles but no barrier to smoke inflow.
- The photoelectric type detector ensures repeated use and by removing the cover can accomplished maintenance easily.
- No harm to humans and animals as no radiation source is used.
- A terminal without output voltage (A type contact) in the base plate is available for providing connection to other control system.
- Nonparity for simple wiring connection.

CATALOG NO. CM.1006

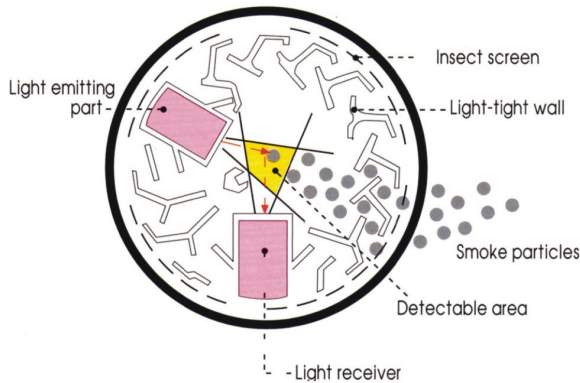
SPECIFICATION

Voltage Rating: 12V DC
 Operating Voltage: 11V~15V DC
 Supervising Current: 60 micro amps.(max.)
 Alarm Activated Current: 100 milli amps.(max.)
 A type contact rating: 1A (max.)resistive load.
 Initial Stabilizing Time: 15 sec.
 Identification Light: Red color(LED)

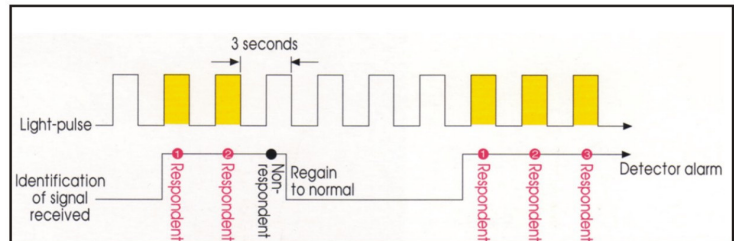
Ambient temperature: -10°C ~ +50°C
 Ambient Humidity: 0~95%
 Body case: PC-ABS Withstands impact and heat
 to a high degree.
 Weight: Approx. 140g
 Color: Creamy-white

OPERATION PRINCIPLES

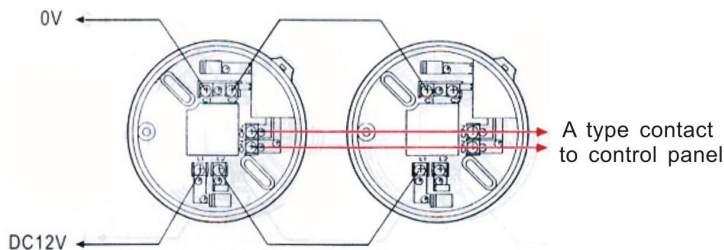
(When smoke entered)



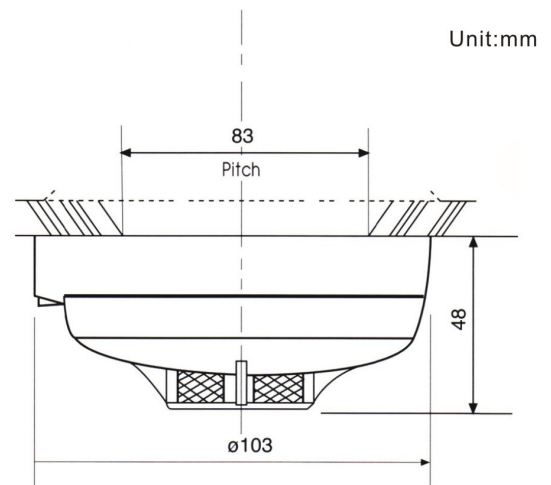
A fire signal is emitted only more than three pulse signals are produced, that is a completely reliable process through thrice confirmations. There are no false alarm due to dust particles, confused pulses and exterior influence.



WIRING AND CONNECTION



MOUNTING STATUS



DISTRIBUTOR: