

CM CHUNG MEI FIRE ALARM SYSTEM

Fixed Temperature Heat Detector



CM-WK100L

ISO 9001, CE Approved

DESCRIPTION

The detector, CM-WK100L incorporates a self-resetting bimetallic disk element with response indicator. It activates whenever the ambient air temperature reaches the top temperature detector setting.

ADVANTAGES

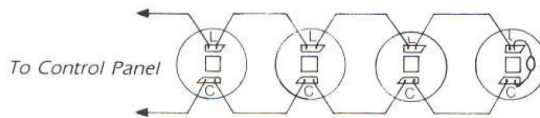
- Stabilized performance, long-term durability and least-malfunction are ensured by employing a bimetal mechanism.
- Self-restoring ensures the elements repeated use.
- The sensitive part is enclosed to prevent from being moistened and contaminated.
- Pure silver contacts ensure the quick response.
- Red indication lamp lights when detector is activated.
- High-temperature-enduring plastics are used to build up the main body which is also nicely shaped.
- The base is in common with other detectors made in this company for the facilitation of installation.
- Connections are non-polarized to avoid wiring mistakes.

CATALOG NO. CM.1002

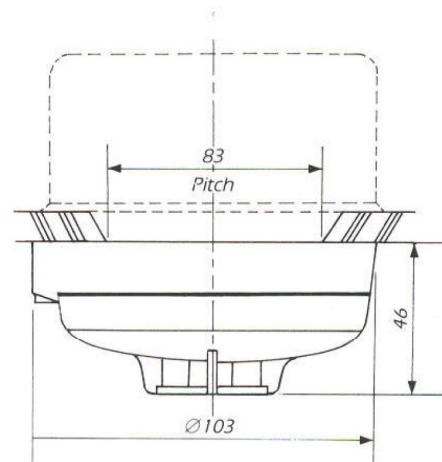
SPECIFICATION

- Alarm Rating: DC30V 70mA max.
- Fixed Temperature: 60°C, 70°C, 80°C.
- Sensitivity:
When exposed within an air stream 1m/sec., 125% higher than its operating temperature, and at 20°C of ambient temperature, the detector will sound an alarm within 90 seconds.
- Dimension: See mounting information.
- Weight: 103gms.
- Color: Ivory white

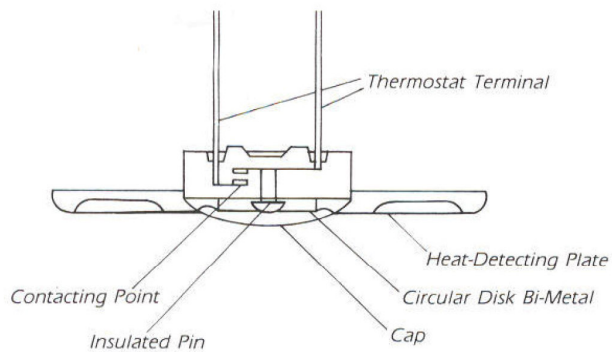
WIRING AND CONNECTION



MOUNTING STATUS



OPERATION PRINCIPLES



DISTRIBUTOR: